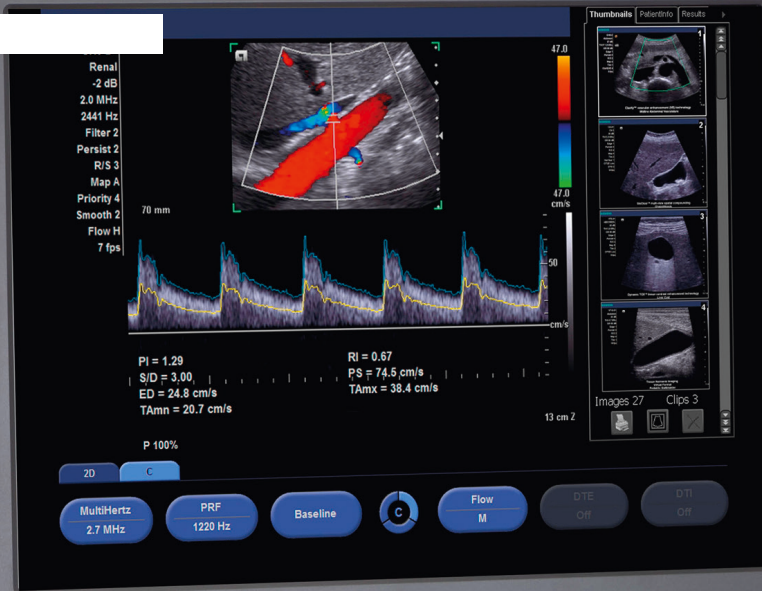


SIEMENS

SIEMENS

ACUSON X300



Precision Meets Versatility for a Complete Cardiology Solution.

ACUSON X300 Ultrasound System, Premium Edition (PE)

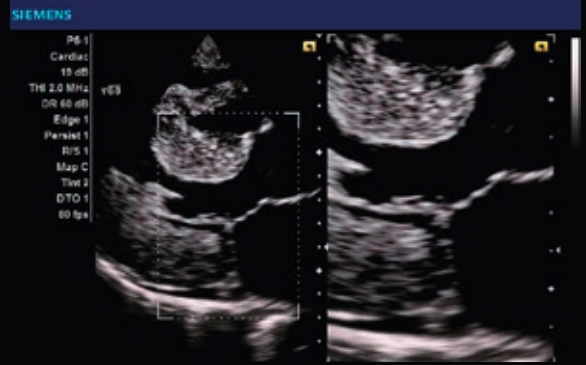
www.siemens.com/ultrasound

The complete cardiology care platform.

Everything you need to get to the heart of the matter—thoroughly, efficiently.

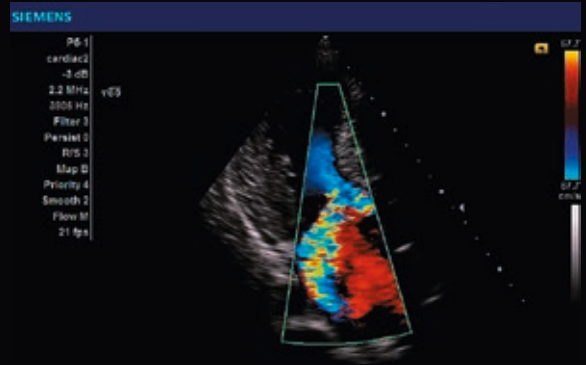
We designed the ACUSON X300™ ultrasound system, premium edition (PE), from the ground up to help you and your team deliver excellent cardiology care—day in and day out. By leveraging our decades of imaging innovations, this powerful ultrasound system gives you superior imaging performance across a range of cardiovascular applications.





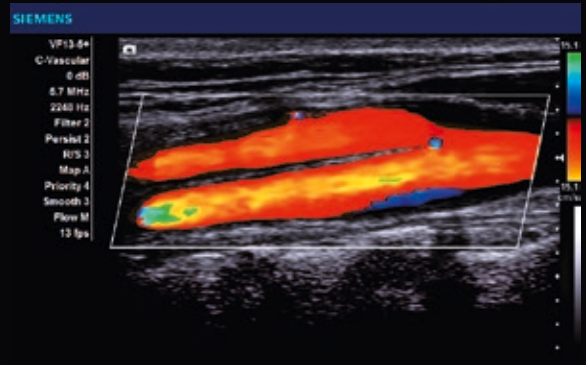
Split/Zoom View

- Split/Zoom view allows for simultaneous display of both the reference and zoomed image in this patient with hypertrophic obstructive cardiomyopathy.



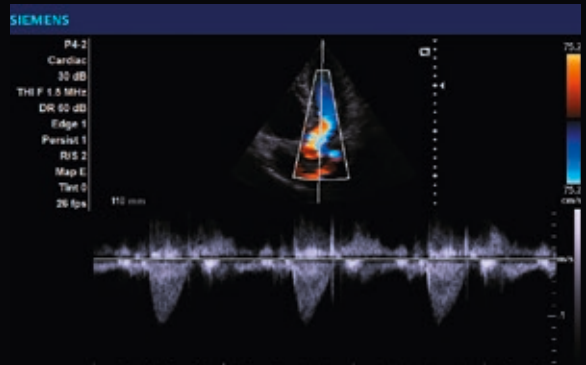
Color Doppler Imaging

- Color Doppler imaging demonstrates regurgitation of the mitral valve in the apical three-chamber view of the heart.



High Frequency Linear Array

- Superior detail resolution and excellent color filling clearly visualize the carotid bifurcation.



Continuous Wave Spectral Doppler

- Steerable Continuous Wave Doppler demonstrates the left ventricular outflow tract in this apical four-chamber view.





Intuitive. Comfortable. Highly Mobile.

The ACUSON X300 PE has it all: quality design and precision imaging in a lightweight, mobile platform—making it the ideal system for multi-use environments.

Intelligent design takes center stage.

Working smart was never more streamlined.

Whether you operate in a private practice, an EP lab or a hospital, the ACUSON X300 PE, provides a range of powerful cardiology-based workflow tools that boost your efficiency, enhance diagnostic quality and simplify repetitive processes.

- Knowledge-based workflow tools including *syngo*® Velocity Vector Imaging™ technology, *syngo*® Auto Left Heart (Auto LH) and *syngo*® Arterial Health Package (AHP)* automate workflow for improved efficiency
- TGO™ tissue grayscale optimization technology provides one button image optimization
- QuikStart rapid reboot and battery operation for instant access to imaging
- ACUSON AcuNav™ ultrasound catheter and Biosense Webster CartoSound™ communication provide enhanced visualization and navigation during complicated intracardiac procedures

*This feature should be utilized according to the ASE Consensus Statement "Use of Carotid Ultrasound to Identify Subclinical Vascular Disease and Evaluate Cardiovascular Disease Risk: A Consensus Statement from the American Society of Echocardiography Carotid Intima-Media Thickness Task Force, Endorsed by the Society for Vascular Medicine."

Price is a Number. Value is Our Promise.

The ACUSON X300 PE is designed to be compatible with a variety of options and future updates, offering you long-term investment protection and flexibility to fit your budget. Providing the right value with your purchase is one of the ways that Siemens earns the trust of our customers. Since 1953, Siemens has been pioneering ultrasound to discover industry-leading solutions that help more people live healthier lives.

Service at Your Fingertips.

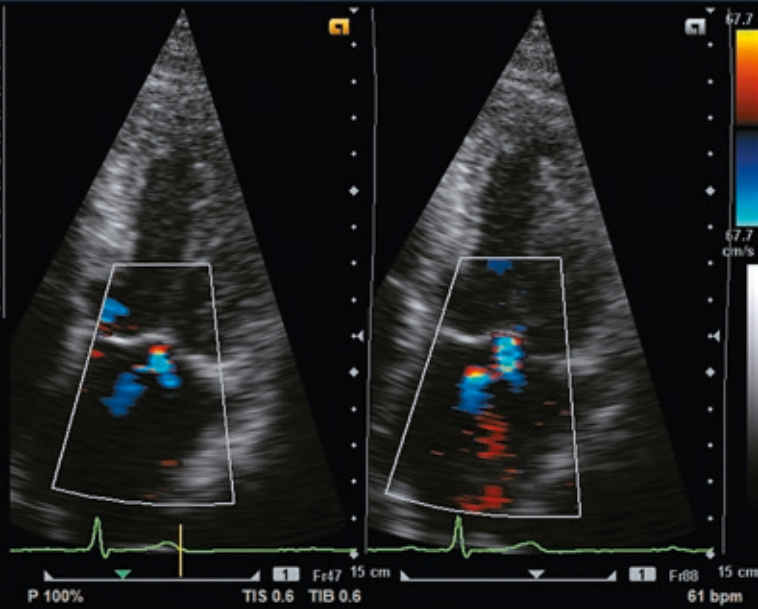
Siemens offers a variety of service plans that suit the needs of different healthcare environments—delivering both superior support and valuable cost savings for any size clinic, cardiology practice or medical setting. Siemens' coverage options provide protection from unexpected costs as well as fast and attentive service—allowing you to stay focused on the people in your care.



SIEMENS

SIEMENS

P5-1
Cardiac
0 dB
2.2 MHz
3906 Hz
Filter 2
Persist 0
R/S 3
Map B
Priority 4
Smooth 1
Flow M
26 fps



Dual Screen Imaging

Highlights mitral valve and allows visualization of regurgitant jets during different cardiac cycles in this technically different patient.

Standalone clinical images may have been cropped for better visualized pathology.

ACUSON, AcuNav, TGO, Velocity Vector Imaging and X300 are trademarks of Siemens Medical Solutions USA, Inc. and *syngo* is a trademark of Siemens AG.

CartoSound and Soundstar are registered trademarks of Biosense Webster, Inc.

Global Siemens Headquarters

Siemens AG
Wittelsbacherplatz 2
80333 Muenchen
Germany

Global Siemens Healthcare Headquarters

Siemens AG
Healthcare Sector
Henkestrasse 127
91052 Erlangen
Germany
Telephone: +49 9131 84-0
www.siemens.com/healthcare

Legal Manufacturer

Siemens Medical Solutions USA, Inc.
Ultrasound
1230 Shorebird Way
Mountain View, CA 94043 USA
Telephone: 1-888-826-9702
www.siemens.com/ultrasound



Order No. A91US-205-1C-4A00 | Printed in USA | CC US 1566 091310.
© 09.2013 Siemens Medical Solution USA, Inc.

www.siemens.com/healthcare