

The image shows a Siemens ACUSON X700 Ultrasound System. The main screen displays the Siemens logo and the text 'ACUSON X700' and 'SIEMENS Ultrasound Systems' over a blue, abstract, flame-like graphic. The control panel is visible below the screen, featuring a large trackball and numerous buttons. The Siemens logo is also visible on the top bezel of the monitor.

**SIEMENS**

A core ultrasound solution bred with premium imaging technology

# A workhorse with thoroughbred DNA

ACUSON X700™ Ultrasound System

[www.siemens.com/X700](http://www.siemens.com/X700)

Answers for life.

# Confidence can be engineered.



Innovation Migration



Engineered Efficiency



Freedom to Grow

Discover a new standard of “standard” with the ACUSON X700 ultrasound system.

Sometimes, the most valuable ultrasound feature is the one you can't see. We've engineered the ACUSON X700™ ultrasound system to deliver the most critical innovation of all: confidence, in both your diagnoses and your investment. This easy-to-operate core system leverages sophisticated imaging technologies to boost efficiency and provide rapid, uniform visualization. With an advanced imaging engine and enhanced transducer compatibility, the ACUSON X700 system is built to run like a champion in any ultrasound environment.

# ACUSON X700

20" LED widescreen display with integrated ergonomic handle

Customizable presets, measurements, and report packages

180° articulating arm

One-touch image optimization

Advanced imaging technologies migrated from ACUSON S Family™ ultrasound systems

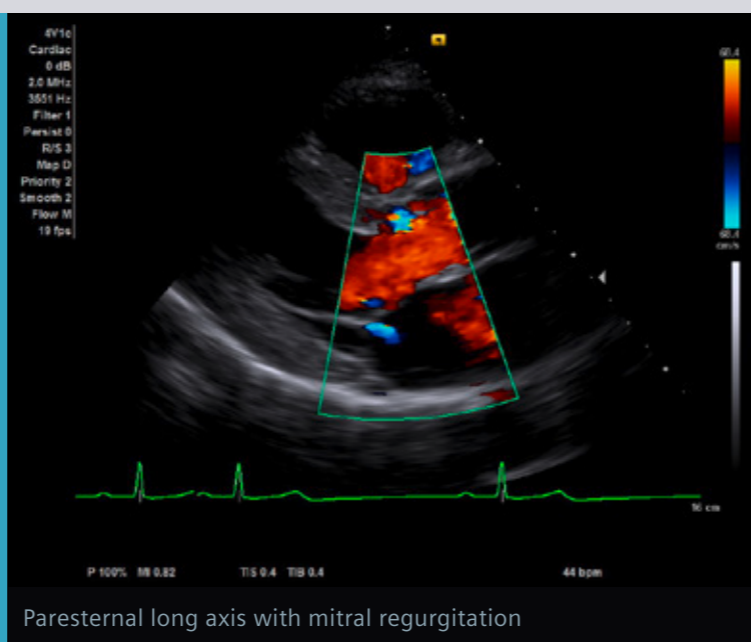
# ACUSON X700 Ultrasound System

Diagnostic confidence.  
Investment confidence.



## Innovation Migration

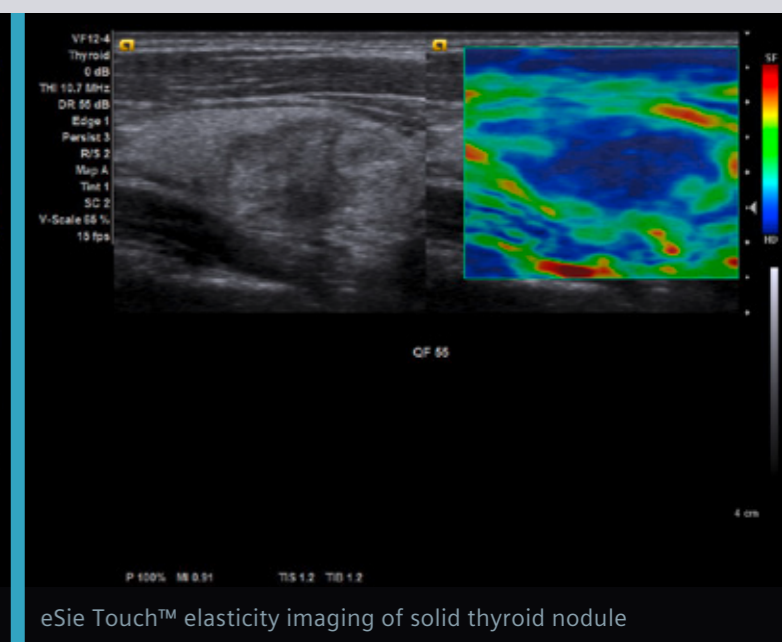
The ACUSON X700™ ultrasound system is built to be a workhorse, but it has thoroughbred DNA. This purpose-driven platform leverages innovations migrated from our premium ACUSON S Family of ultrasound systems to help deliver clinical confidence through access to some of the most advanced technologies available.



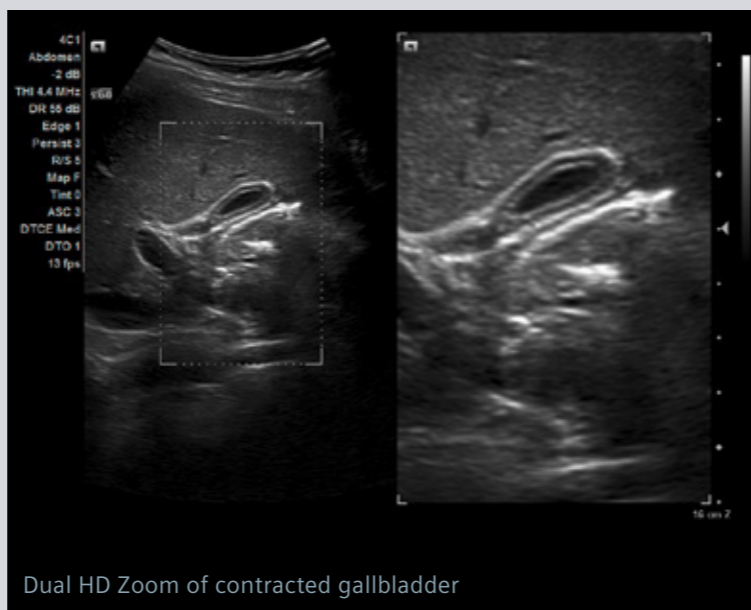
Parasternal long axis with mitral regurgitation



Color Doppler of hepatic veins



eSie Touch™ elasticity imaging of solid thyroid nodule



Dual HD Zoom of contracted gallbladder



Fetal profile



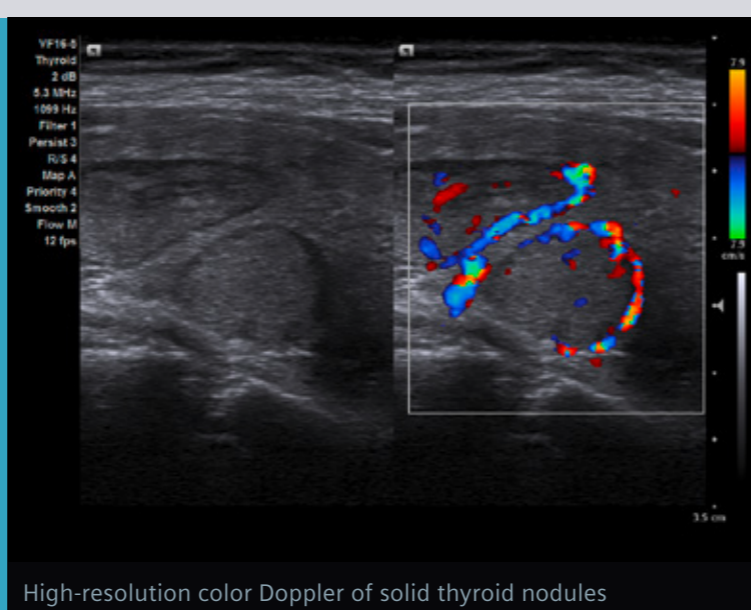
## Engineered Efficiency

Streamline your daily imaging practices with an ultrasound system that delivers advanced, knowledge-based applications, QuikStart rapid boot, and compatibility across ACUSON X Family™ and ACUSON S Family transducers.

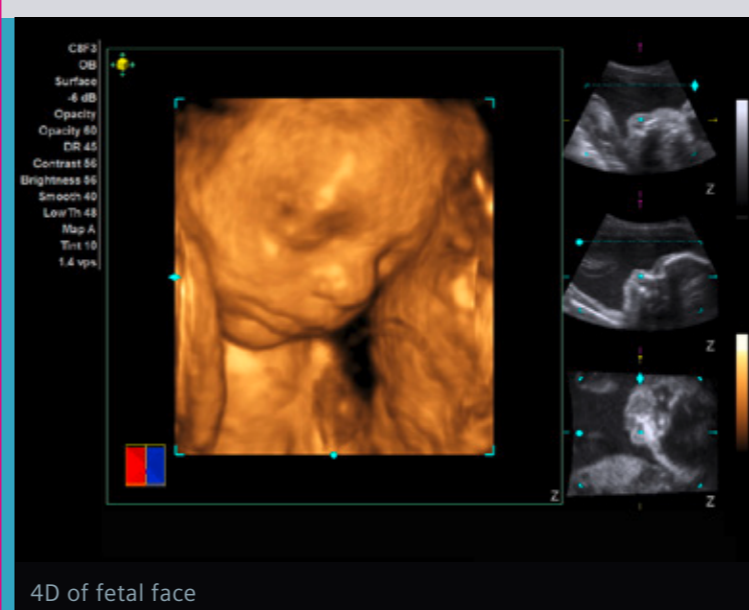


## Freedom to Grow

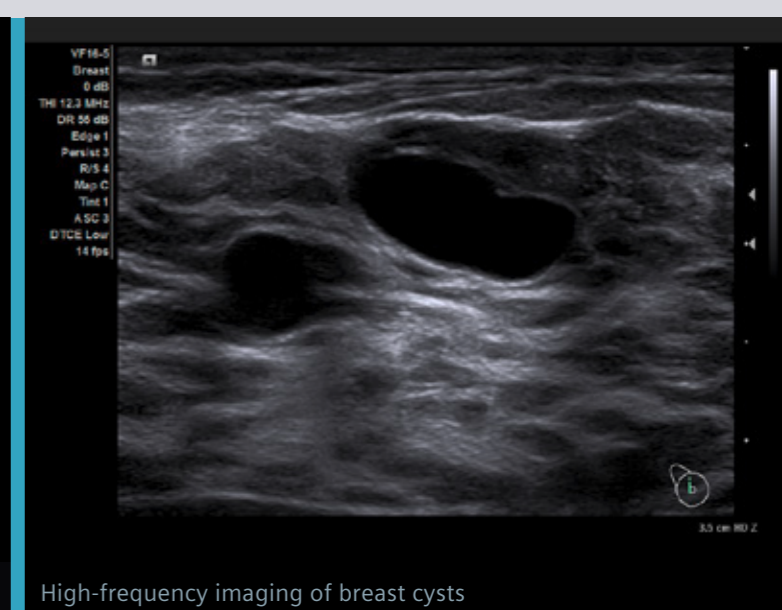
Bet on an ultrasound system with the flexibility to meet today's clinical demands and the adaptability to continue to meet your challenges as they evolve. The ACUSON X700 system protects your investment with clinical versatility as well the freedom to easily incorporate upgrades as you need them.



High-resolution color Doppler of solid thyroid nodules



4D of fetal face



High-frequency imaging of breast cysts

Standalone clinical images may have been cropped to better visualize pathology.

ACUSON S Family, ACUSON X Family, ACUSON X700, and eSie Touch are trademarks of Siemens Medical Solutions USA, Inc.

**Global Siemens Headquarters**

Siemens AG  
Wittelsbacherplatz 2  
80333 Muenchen  
Germany

**Global Siemens  
Healthcare Headquarters**

Siemens AG  
Healthcare  
Henkestraße 127  
91052 Erlangen  
Germany  
Phone: +49 9131 84-0  
[www.siemens.com/healthcare](http://www.siemens.com/healthcare)

**Legal Manufacturer**

Siemens Medical Solutions USA, Inc.  
Ultrasound  
685 E. Middlefield Road  
Mountain View, CA 94043  
USA  
Phone: 1-888-826-9702  
[www.siemens.com/ultrasound](http://www.siemens.com/ultrasound)