

SIEMENS

HELX
EVOLUTION
WITH TOUCH CONTROL

ACUSON S1000
ULTRASOUND SYSTEM

Hey there!

HELX
EVOLUTION
WITH TOUCH CONTROL

HELX
Evolution
with Touch
Control

siemens.com/touch

Exceptional Value

ACUSON S1000 Ultrasound System,
HELX Evolution with Touch Control



Ultrasound – Designed by You.

If you could design your own ultrasound system, what would you do? We conducted over 170 usability sessions and spoke with 395 healthcare professionals* from around the world to find out what they wanted in an ultrasound system.

Their most common request: An intuitive and smart ultrasound system that enables healthcare providers to effectively manage today's demanding caseloads and diversity of clinical choices.

The ACUSON S1000™ ultrasound system, HELX™ Evolution with Touch Control was designed with a dedicated focus on Vascular and Shared Service imaging. It offers new levels of workflow efficiency, imaging performance and sustainability.

* Data on file.





SIEMENS

ACUSON S1000
ULTRASOUND SYSTEM

HELX
EVOLUTION
WITH TOUCH CONTROL

ACUSON S1000
ULTRASOUND SYSTEM

Hey there!

HELX

HELX
EVOLUTION

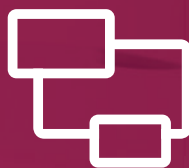
ACUSON

S
1
0
0
0



Workflow

Increase process efficiency and patient throughput with intuitive workflow innovations



Imaging Performance

Strengthen clinical capabilities with enhanced imaging technologies that advance diagnostic clarity



Sustainability

Investment protection with an upgradeable ultrasound architecture that addresses evolving needs



Workflow

Efficient Workflow – Designed for You.

Increase your process efficiency and patient throughput with intuitive workflow innovations offered by the ACUSON S1000 system, HELX Evolution with Touch Control.

Powered by an intuitive, user-centric interface, the system promotes streamlined exam flows to improve exam quality with less effort. Its new usability concept helps to eliminate unnecessary keystrokes and repetitive hand movements providing a whole new level of user performance.

Intuitive Touch Display

- 12.1-inch (30.7 cm) high-resolution display with Instant Response technology allows for precise key selections
- Tab folder browsing improves walk-up usability by eliminating hidden menus and swipe searching

Simplified Control Panel

- Fewer keys and a simplified home-base control structure help to optimize exam workflows and reduce training time
- Laser-optical trackball promotes sensitivity and accuracy in measurements and helps reduce repetitive stress injuries
- Digital and tactile keyboards increase flexibility for different user preferences and workflow situations



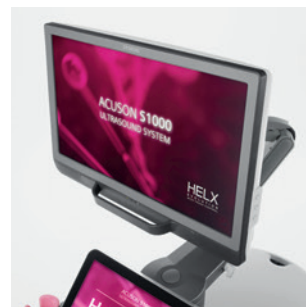
44%
fewer soft keys*

33%
fewer tactile keys*

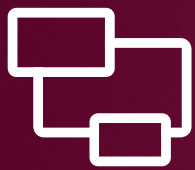
22%
fewer home-base keys*

Workflow Innovations

- Context-sensitive body markers feature intuitive pictograms, transducer markers and supportive protocols
- Smart-swap annotations with color-coded guidance simplify annotations by suggesting logical replacement text specific to the exam being performed
- Directly access and control eSieScan™ workflow protocols through the touch display



*Data on file.

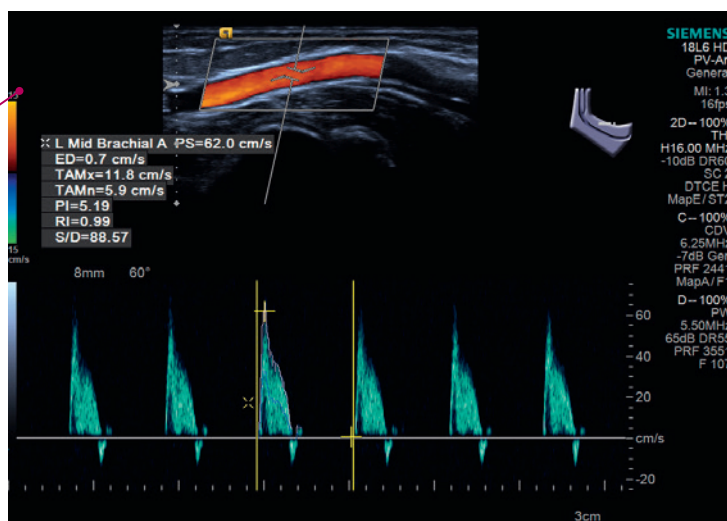


Imaging Performance

Pioneering Technologies – Available to You.

Gain Access to Pioneering, Premium Ultrasound Technologies

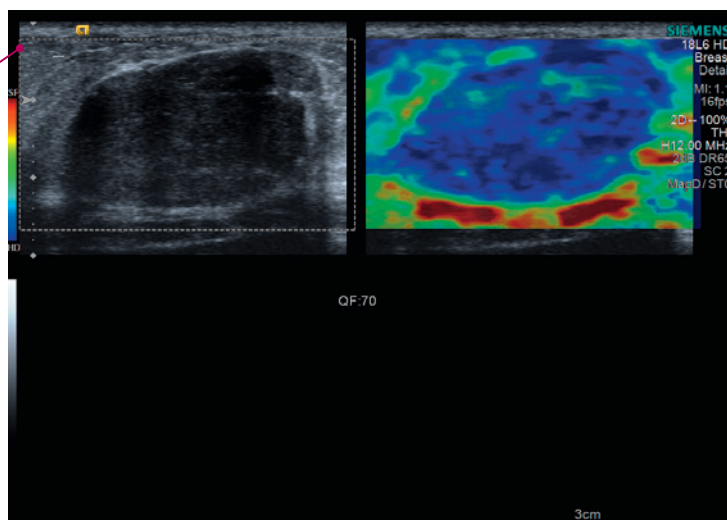
- The 18L6 HD transducer offers exquisite detail resolution for high-frequency imaging
- eSieImage™ multiparametric optimization reduces exam time and increases operator comfort while providing crisp, uniform images
- Comprehensive measurement and report packages included



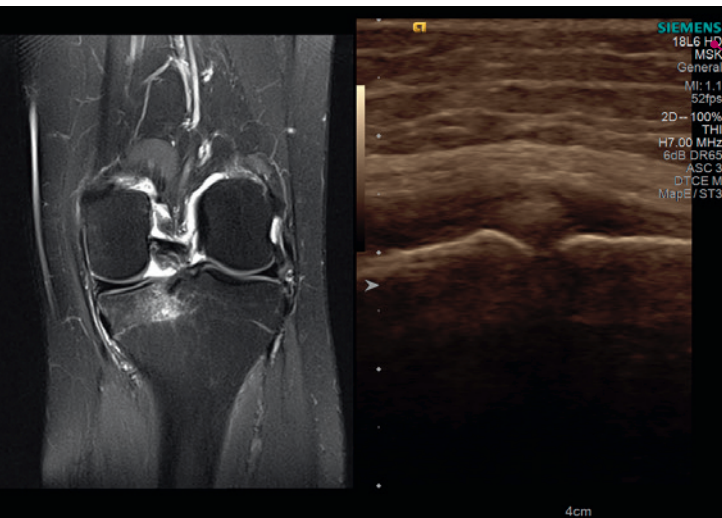
Color and pulsed wave Doppler of brachial artery

Expand Clinical Insight Through Elastography Imaging

- Depict relative tissue stiffness using compression elastography with eSie Touch™ elasticity imaging
- Real-time qualitative feedback to assist imagers in optimizing their acquisition technique
- Supported on linear, endocavity and curved array transducers



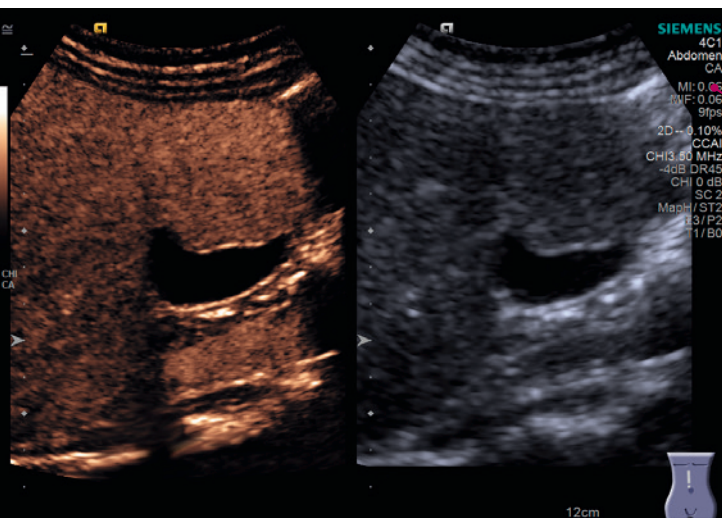
eSie Touch elasticity imaging of breast fibroadenoma



Multi-modality review of lateral meniscus with MRI

Perform On-System Multi-Modality Review

- Import historic CT, MRI, mammograms, ultrasound, and 3D breast volume studies
- Review historic images on-system to compare with real-time ultrasound
- Reduce operator skill variability and improve exam reproducibility

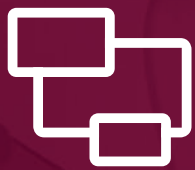


Focal nodular hyperplasia with CHI

Experience In-depth Anatomy Visualization with Contrast Enhanced Ultrasound* (CEUS)

- Designed for visualization of lesions in organs based upon vascularity and micro-bubble visualization
- Cadence™ Contrast Harmonic Imaging* (CHI) for the visualization of stunning detail
- Cadence™ Contrast Pulse Sequencing* (CPS) for penetrating clarity

* At the time of publication, the U.S. Food and Drug Administration has cleared ultrasound contrast agents only for use in LVO. Check the current regulation for the country in which you are using this system for contrast agent clearance.



Imaging Performance

Beautiful Images – Acquired by You.

HELIX EVOLUTION

The unique signal processing algorithm of the SieStream™ HD architecture works to produce the highest signal fidelity. It optimizes signal integration between transducer and display by doubling the standard pixel density. The result: beautiful images that provide you with the highest diagnostic confidence.

18L6 HD Transducer



Median nerve



4C1 Transducer



Liver/kidney interface



6C2 Transducer

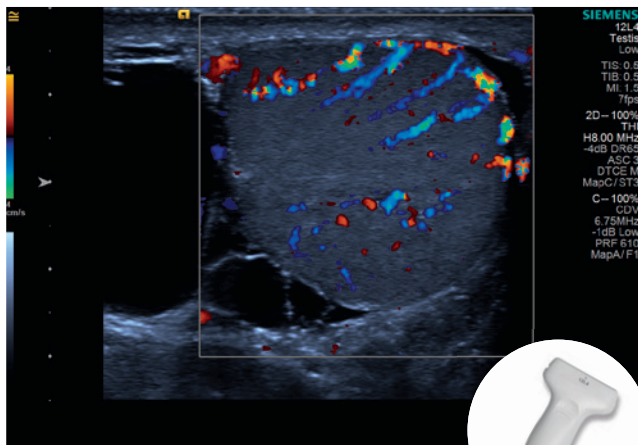


Kidney with color Doppler





12L4 Transducer



Color Doppler of testicle with hydrocele

9L4 Transducer



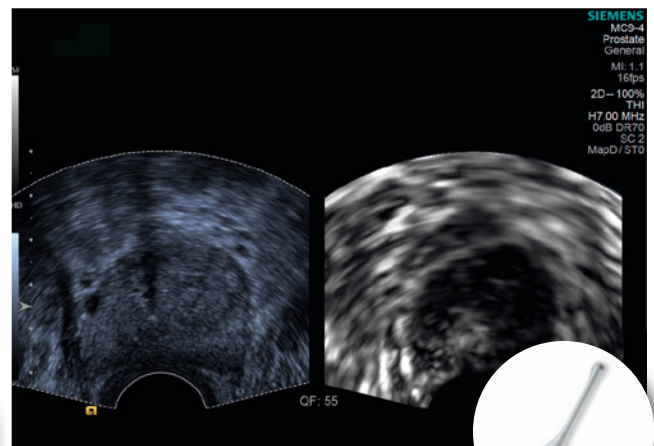
Clarify™ vascular enhancement (VE) technology of fetal heart

4V1c Access Transducer

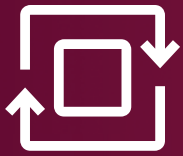


Four chamber view of the heart

MC9-4 Transducer



Prostate with eSie Touch elasticity imaging



Sustainability

Investment Protection – Customizable for You.



The ACUSON S1000 system, HELX Evolution with Touch Control is designed to adapt to your standard of care. From usability to technical compliance standards, Siemens has worked to ensure that the system you invest in today will be up-to-date and ready to integrate the most advanced technologies for years to come. This allows you to manage your costs without compromising your quality of care.



Access to General Imaging Technology and Basic Packages, Including

- Advanced SieClear™ spatial compounding
- Clarify vascular enhancement (VE) technology
- SieScape™ panoramic imaging
- eSiImage multiparametric optimization
- Multi-modality review
- Data transfer to Nuance® Powerscribe 360
- Wireless DICOM reporting (optional)

Comprehensive Service Packages

- Siemens Performance Plans for optimal system performance
- ASCEND* upgrades for maximum investment protection
- Ultrasound Evolve* software updates to enhance productivity
- Siemens Remote Service™ for fast diagnosis and software delivery
- Ultrasound System Security to deliver confidence and compliance

Microsoft® Windows® 7 Integration

- Improved network security and system stability
- Enhanced compatibility with electronic medical systems
- Scalable for the future

*Due to regulatory reasons, future availability cannot be guaranteed.

Standalone clinical images may have been cropped to better visualize pathology.

ACUSON S1000, Advanced SieClear, Cadence, Clarify, eSieImage, eSieScan, eSie Touch, HELX, SieScape and SieStream are trademarks of Siemens Medical Solutions USA, Inc.

Siemens Remote Service is a trademark of Siemens AG.

Nuance PowerScribe 360 is a trademark of Nuance Communications.

Microsoft and Windows are trademarks of Microsoft Corporation.

QR Code is a registered trademark of DENSO WAVE INCORPORATED.

Read the QR Code® with the QR Code reader in your mobile!



Siemens Healthcare Headquarters

Siemens Healthcare GmbH
Henkestraße 127
91052 Erlangen
Germany
Phone: +49 9131 84-0
siemens.com/healthcare

Legal Manufacturer

Siemens Medical Solutions USA, Inc.
Ultrasound
685 East Middlefield Road
Mountain View, CA 94043
USA
Phone: +1-888-826-9702
siemens.com/ultrasound

Order No. A91US-350-1C-4A00 | Printed in Germany | CG 3133 101510. | © Siemens Medical Solutions USA, Inc., 2015

siemens.com/touch