

Ultrasound in Emergency Medicine

Siemens understands FAST



Verify clinical suspicions quickly with the ACUSON X300™ ultrasound system, premium edition (PE). Compact, ergonomic, and easy to use, the ACUSON X300 PE offers exceptional image quality and a robust feature set to meet the diverse imaging needs of the emergency department. Valuable features such as a 12-second system reboot and single-button image optimization help you obtain the diagnosis quickly, minimizing the time from triage to treatment.

Highlights

Immediate Access to Scanning When Time is of the Essence

The 12-second system reboot offers unparalleled power-up time providing instant access to imaging during the most demanding clinical situations.

Simplify Usability with Single-Button Operation

Deliver consistently optimized 2D imaging across varying patients, operators, and applications at the touch of a single button with TGO™ tissue grayscale optimization technology.

Practical Ergonomics in a Compact, Mobile System

The lightweight, small footprint design enables convenient access when and where you need it. Scanning at the crowded bedside is easy with the height-adjustable control panel and large, fully articulating flat panel display.

Streamline Workflow from Imaging to Reporting

Dedicated emergency medicine report package includes FAST exam checklist, gallbladder, aorta, early pregnancy, and cardiac measurements. Ideal for training and credentialing documentation, the customizable report summary includes your institution's logo, pre-configured comments, insertion of key images, and a physician signature line.

Flexible Image Management

Archive images and reports to the system's hard drive, CD/DVD, or a USB device. Sending images to DICOM-enabled networks is also supported.

**ACUSON X300 ultrasound system, premium edition.
Compact. Efficient. Uncompromised performance.**

www.usa.siemens.com/emergencymedicine

SIEMENS



Cholelithiasis

Excellent contrast resolution demonstrates multiple gallstones with well-defined acoustic shadowing.



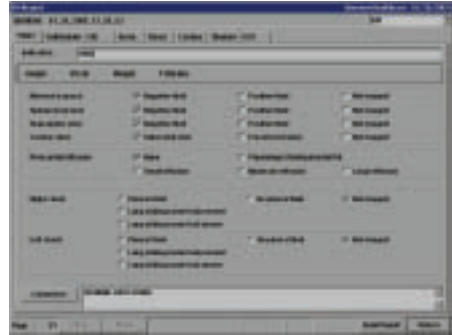
Intraperitoneal Fluid

Small amount of free fluid is well visualized posterior to the right lobe of the liver.



Endovaginal Imaging

Eight week intrauterine pregnancy and amniotic membrane are clearly demonstrated with the EV9-4 transducer.



Focused Reporting

Dedicated Emergency Medicine report package includes exam checklist for quick and easy documentation of results.

On account of certain regional limitations of sales rights and service availability, we cannot guarantee that all products included in this brochure are available through the Siemens sales organization worldwide. Availability and packaging may vary by country and is subject to change without prior notice. Some/All of the features and products described herein may not be available in the United States.

The information in this document contains general technical descriptions of specifications and options as well as standard and optional

features which do not always have to be present in individual cases.

Siemens reserves the right to modify the design, packaging, specifications and options described herein without prior notice. Please contact your local Siemens sales representative for the most current information.

Note: Any technical data contained in this document may vary within defined tolerances. Original images always lose a certain amount of detail when reproduced.

Global Siemens Headquarters

Siemens AG
Wittelsbacherplatz 2
80333 Muenchen
Germany

Global Siemens Healthcare Headquarters

Siemens AG
Healthcare Sector
Henkestrasse 127
91052 Erlangen
Germany
Phone: +49 9131 84-0
www.siemens.com/healthcare

Local Contact Information

Siemens Medical Solutions USA, Inc.
51 Valley Stream Parkway
Malvern, PA 19355-1406
USA
Phone: +1-888-826-9702
www.usa.siemens.com/healthcare

Global Business Unit

Siemens Medical Solutions USA, Inc.
Ultrasound
1230 Shorebird Way
Mountain View, CA 94043
USA
Phone: +1-888-826-9702
www.usa.siemens.com/healthcare

Legal Manufacturer

Siemens Medical Solutions USA, Inc.
Ultrasound
1230 Shorebird Way
Mountain View, CA 94043
USA

www.siemens.com/healthcare