

ACUSON X300 ultrasound system, premium edition

Urology



The versatile, compact platform for today's urology challenges

The ACUSON X300™ ultrasound system, premium edition (PE) provides the versatility, performance and image quality needed for all of your urological needs. From imaging through biopsy, the system provides advanced capabilities including live bi-plane and lithotripsy options for communication with the Siemens lithotripters. Workflow enhancements, such as TGO™ tissue grayscale optimization technology and the advanced ErgoDynamic™ imaging system design, provide an efficient and comfortable solution to quickly move you through ultrasound exams.

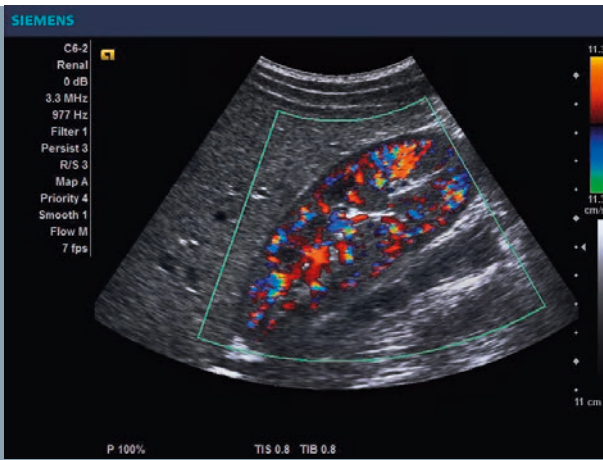
Highlights

- **A Flexible, Comprehensive Solution:**

With a variety of transducers and applications, the system offers a complete solution and supports advanced capabilities such as live bi-plane imaging and lithotripsy solutions.

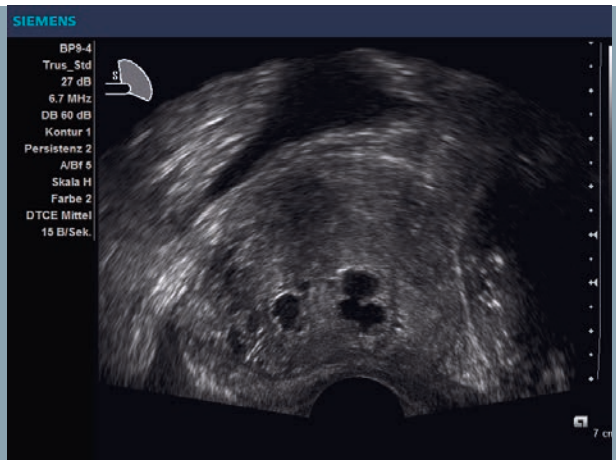
- **Live Bi-Plane BP9-4 Transducer:**
Ergonomically designed, this transducer provides live bi-plane imaging for simultaneous viewing of both the longitudinal and transverse imaging planes providing more information. Additionally, live bi-plane biopsy is supported.
- **Flexible Biopsy Options:**
Disposable and reusable biopsy guides are supported. Provides both an angled and a straight biopsy path to improve patient comfort and flexibility in accessing both deep and superficial zones for prostate biopsy.
- **TGO Tissue Grayscale Optimization Technology:**
Shortens exam time, reduces repetitive motion and increases diagnostic confidence by optimizing exams consistently across patients, operators and applications at the touch of a button.
- **AutoColor Technology:**
Single touch color flow optimization tool quickly adjusts for varying flow states to enhance workflow.
- **Dynamic TCE™ Tissue Contrast Enhancement Technology:**
Advanced, proprietary, real-time processing algorithm that enhances tissue contrast resolution through speckle reduction, thus improving border definition.
- **SieClear™ Multi-View Spatial Compounding:**
Receives multiple lines of sight to improve contrast resolution and tissue differentiation in real-time. Tissue boundaries and interfaces appear sharper and more continuous.
- **Physician Summary Utility:**
Supports on-system report generation including customizable letterhead, patient data, images, comments, recommendations and a customizable signature line.

Answers for life.



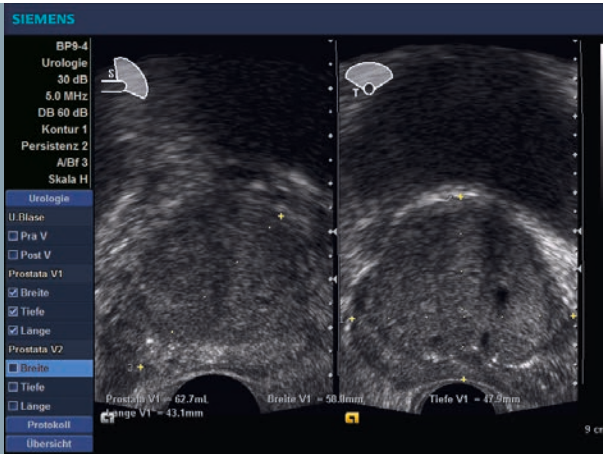
Color Doppler Imaging

Provides excellent sensitivity demonstrating flow out to the renal cortex.



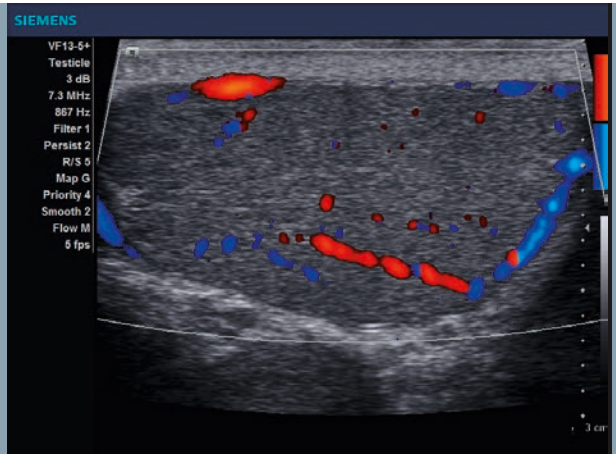
Dynamic TCE Technology

Enhances tissue contrast resolution and reduces speckle for excellent differentiation of this enlarged prostate gland.



Live Bi-Plane BP9-4 Transducer

Provides live, simultaneous, bi-plane visualization of the prostate gland.



Directional Color Power Doppler Imaging

Improves color sensitivity and captures small vessels within the testicle.

Standalone clinical images may have been cropped to better visualize pathology.

ACUSON, Dynamic TCE, ErgoDynamics, SieClear and TGO are trademarks of Siemens Medical Solutions USA, Inc. and LITHOSKOP is a trademark of Siemens AG.

Order No. **A91US-183-1C-4A00** | Printed in Germany | CC 1382 0513X. | © 05.2013 Siemens Medical Solutions USA, Inc.

Global Siemens Headquarters

Siemens AG
Wittelsbacherplatz 2
80333 Muenchen
Germany

Global Siemens Healthcare Headquarters

Siemens AG
Healthcare Sector
Henkestr. 127
91052 Erlangen
Germany
Phone: +49 9131 84-0

Legal Manufacturer

Siemens Medical Solutions USA, Inc.
Ultrasound
685 E. Middlefield Road
Mountain View, CA 94043 USA
Phone: 1-888-826-9702