



P7-3Ts Transesophageal Echo Phased Array Probe

A new world of echocardiography

The use of Transesophageal Echocardiography (TEE) coupled with Transthoracic Echocardiography (TTE) now plays a more important role during daily echocardiogram examinations.



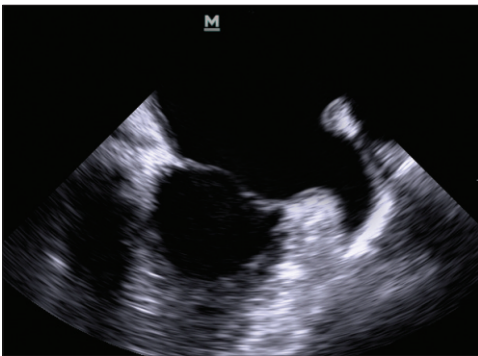
mindray
healthcare within reach

Advantages of TEE

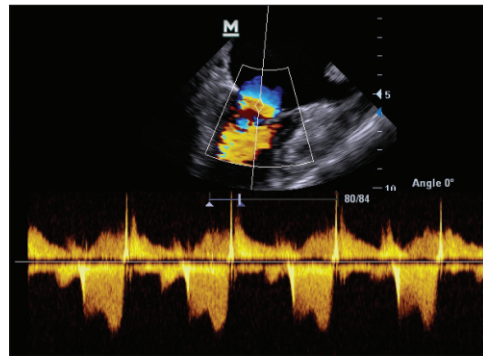
- Strong ultrasound signal avoiding the chest wall, providing you with high resolution images
- Clear view of structures difficult to examine transthoracically
- High sensitivity for locating a blood clot inside the left atrial appendage and treating atrial septal defect
- Intra-operative monitoring during cardiac operation

Probe features

- Equipped with advanced high-end imaging technologies
- High frequency for excellent image performance
- Wide angle of view
- Precise temperature control for tissue safety
- Easy handling
- Soft , slim and flexible shaft



Left atrial appendage



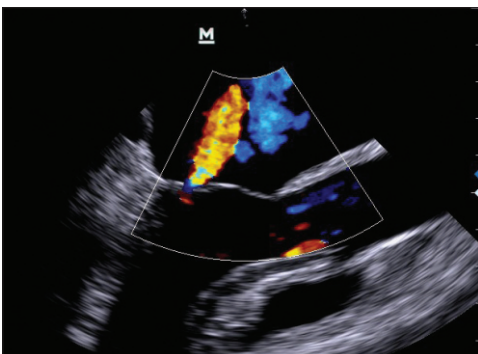
Spectrum of mitral valve stenosis



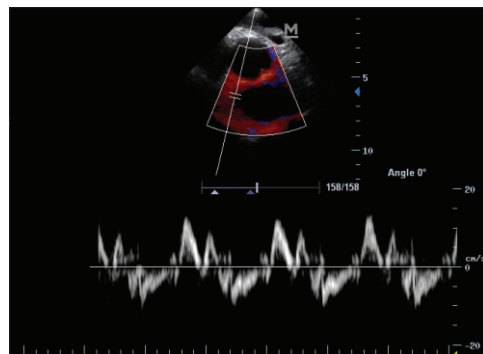
Atrial septal defect



Atrial septal defect occlusion



Mitral regurgitation



TDI

mindray

Mindray is listed on the NYSE under the symbol "MR"

Mindray Building, Keji 12th Road South, High-tech Industrial Park,
Nanshan, Shenzhen 518057, P.R. China

Tel: +86 755 26582888 Fax: +86 755 26582680

E-mail: intl-market@mindray.com Website: www.mindray.com



MINDRAY is a trademark of Shenzhen Mindray Bio-Medical Electronics Co., Ltd. Specifications subject to changes without prior notice.
© 2010-2012 Shenzhen Mindray Bio-Medical Electronics Co., Ltd. All rights reserved.