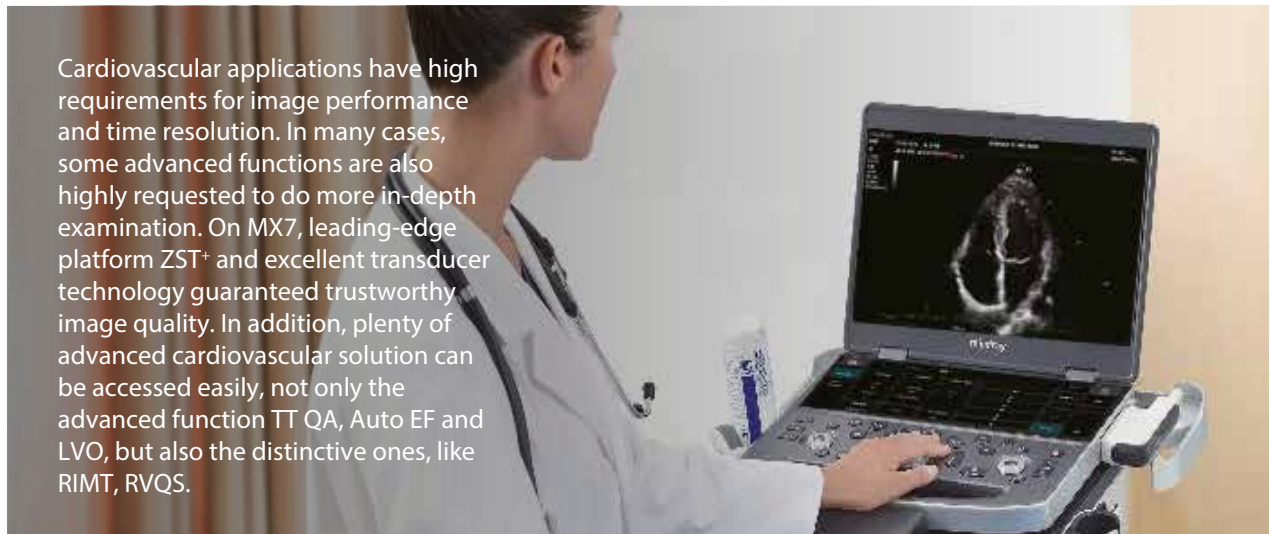


## Dedicated Cardiovascular solution

Cardiovascular applications have high requirements for image performance and time resolution. In many cases, some advanced functions are also highly requested to do more in-depth examination. On MX7, leading-edge platform ZST+ and excellent transducer technology guaranteed trustworthy image quality. In addition, plenty of advanced cardiovascular solution can be accessed easily, not only the advanced function TT QA, Auto EF and LVO, but also the distinctive ones, like RIMT, RVQS.



### Tissue Tracking Quantitative Analysis

Based on the excellent transducer technology, MX7 significantly improves the tracking accuracy and effectiveness. With the unique added benefit of on-site analysis, the TT-QA can be performed at the bedside, saving time and simplifying challenging diagnoses.



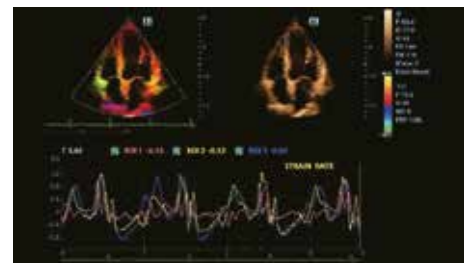
### Auto EF

Automatically recognize A2C or A4C  
Automatically recognize the border of endocardium  
Automatically recognize diastole and systole frames



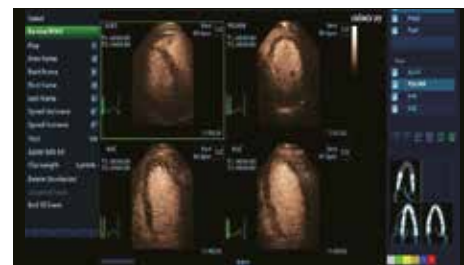
### Tissue Doppler Imaging (TDI)

Multi-TDI modes : TVI, TEI, TVD and TVM, and support real time and Offline comparison analysis



### Stress Echo

Stress Echo provides evaluation of myocardial perfusion and viability  
It is supporting multiple load protocols. Also provide cardiac wall motion score.  
Supporting stress imaging under LVO



### LVO (Left ventricle Opacification)

Providing clearer endocardia border display to improve image performance of difficult patients.



### RIMT

RF-data Based IMT on accurate real-time IMT measurement with high precision, real time and auto measurement, can improve early diagnosis of CVDs and improve the effectiveness of pharmacy treatment follow-up



### Phased Array—P4-2s

- Exclusive resolution
- 2.0-38.0cm penetration depth
- High color sensitivity
- Support Low MI Contrast
- Biopsy kit: NGB-011



### Combo Wave Linear—L13-3Ns

- Balanced Penetration and resolution
- High color sensitivity
- Support Natural Touch Elastography
- Biopsy kit: NGB-007



### Combo Wave Linear—L9-3s

- Exclusive vascular performance
- High color sensitivity
- Support Natural Touch Elastography
- Biopsy kit: NGB-034



### Phased Array—P10-4s

- 2.0-16.5cm penetration depth
- High resolution and color sensitivity
- Pediatric cardiac,  
Neonatal cardiac application



### TEE transducer—P7-3Ts

- Bandwidth: 1.9-8.2MHz
- FOV: 90°
- High resolution and color sensitivity
- Adult cardiac monitoring



### TEE transducer—P8-3Ts

- Bandwidth: 2.8-7MHz
- FOV: 90°
- High resolution and color sensitivity
- Pediatric cardiac monitoring

