

mindray

MX7

Dedicated Portable Ultrasound System



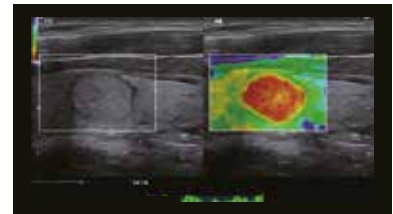
Dedicated General Imaging solution

As the most common ultrasound application, general imaging requires accurate and reliable images during scanning. The MX7 Ultrasound System combines best-in-class image quality with an intuitive user experience to help ensure reliable and efficient diagnosis on the daily basis.

Equipped with remarkable curved and linear transducer, plus advanced functions such as the Natural Touch Elastography, Contrast Imaging and iNeedle+ function, assist to perform precise and smooth GI examinations.

Natural Touch Elastography

Based on Mindray's latest patented technology, natural touch elastography reduces dependence on user's operation technique, improving operator's reproducibility for higher clinical utility with higher stiffness sensitivity and good stability and reproducibility.



Ultra-Wideband Non-linear Contrast Imaging

The UWN+ contrast image on MX7 enables to detect and utilize both 2nd harmonic and non-linear fundamental signals, generate the significantly enhanced images in better sensitivity, With minor signals and longer agent duration under lower MI.



iNeedle+

Our second-generation iNeedle+ technology automatically detects needle angle and improves visibility on both linear and convex transducers during interventional procedures, both convex and linear transducer can support this function.



MX7

Dedicated Portable Ultrasound System

3T Convex—C5-1s

- R60 and thinner for excellently touching with patient
- High color sensitivity
- Support Contrast Imaging
- Biopsy Kit: NGB-031



Combo Wave Linear—L13-3Ns

- Balanced Penetration and resolution
- High color sensitivity
- Support Natural Touch Elastography
- Biopsy Kit: NGB-007



Combo Wave Linear—L14-6Ns

- High frequency transducer
- Small footprint
- Support Natural Touch Elastography
- Biopsy Kit: NGB-007



Combo Wave Linear – L20-5s

- High frequency transducer
- High resolution and sensitivity
- Small footprint



Hockey Stick transducer - L16-4Hs

- Special designed for MSK and rheumatism, better holding experience
- High resolution and sensitivity
- Support elastography



Pedoff transducer – CW2s

- CW signal for Professional TCD exam

